

microlab



## POSTURAL ACCESSORIES CASE

Microlab di A. Vannella

Via Pierino Colombo, 3 – 20871 Vimercate (MB) - ITALY

Tel. +39 039 6080924 – +39 039 6851488 – [segreteria@avmicrolab.it](mailto:segreteria@avmicrolab.it) -

[www.avmicrolab.it](http://www.avmicrolab.it)





## Valise of postural accessories

For the execution of the postural tests is of fundamental importance the range of accessories that allow to commit the least number of errors through the feedback that provide the same tests as equipped with a precise protocol of use. For this purpose was set up a valise for the analysis of Barré, oculomotricity as well as of a series of devices for the administration of postural input in order to implement the re-modulation of the Fine Postural System.

The accessories are of high quality and certified by the manufacturers AVAILABLE IN: **BASE, PRO, FULL**

### VISUAL TESTS

Square prism with handle 6dptp

Pallet cover test black occluder

Facchin foria card away 2pz horiz+

Worth lights to near with eyeglass

Lang stereo test II (only v. **FULL**)

Spheres of Wolff-fixing 2pz.

### VALUATION TOOLS POSTURAL

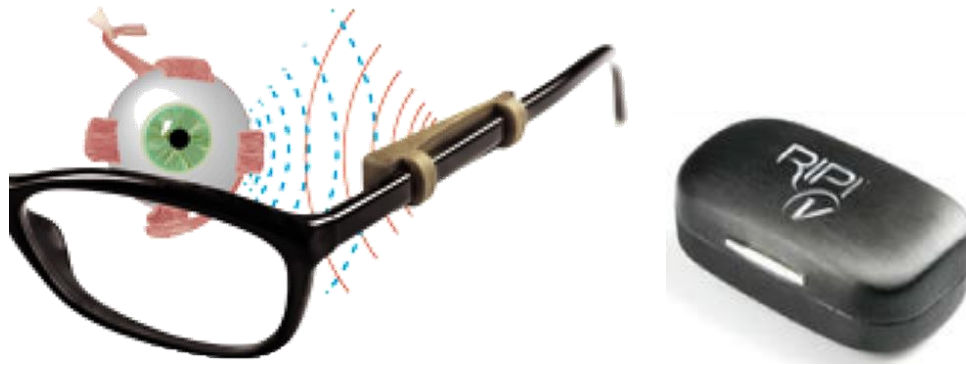
Somatometer (plumb line, graduated arrow, positioning plate and scale evaluation twist basin) (only v. **PRO** e **FULL**)

### DISPOSITIVI DI INPUT

RipiV 2pz (device to treat hypoconvergence)

Thickness / heel seat linings 2mm for proprioceptive podalic stimulation

Glasses with multiple pinholes

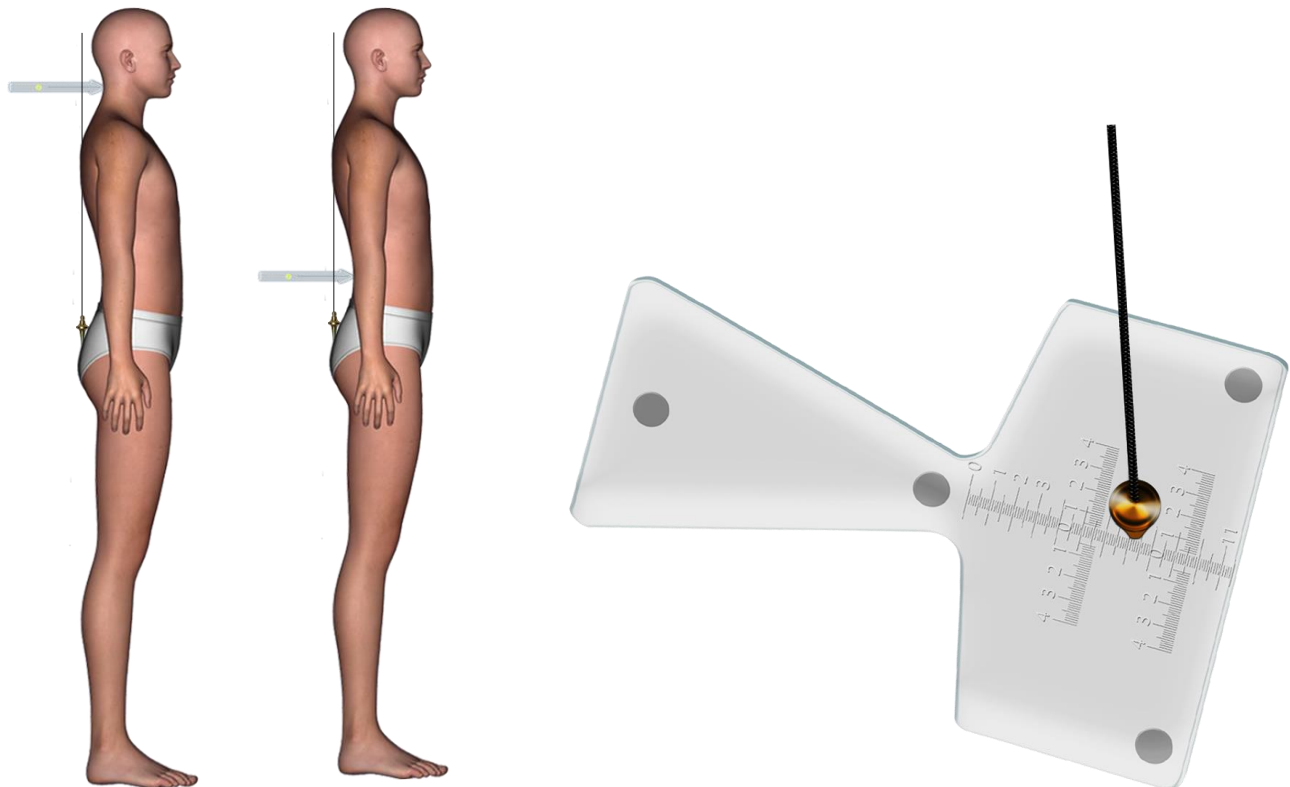


## RIPIV® (device to treat hypoconvergence)

### HOW IT WORKS

FREQUENCIES ARE THE VOICE OF THE UNIVERSE, the language through which our body interacts with the world around him: thanks to the special ceramic included in RIPI (Rebalancing Permanent Infrared) we can use the language of FAR INFRARED to relax the muscles that moves our eyes and helping people MAXIMUM PERFORMANCE. The RIPI, the subject of international patent, in the form of special principals (applications for glasses, sports equipment, bite, orthodontic braces, insoles, shoes, bandages, ...) is placed near the main " of our body sensors (in this case alongside eye) because it is able to REFLECT THE FAR INFRARED (1) we emit without producing heat (2), without causing contact reactions (3) and absolutely safe with regard to the complete absence of radioactivity (4). the RIPI-V is a DM Class I - EC (No 1110186 of 03/12/2014)

1. CNR Nanotecnologie- università di Pisa
2. ASSOCIAZIONE ITALIANA DI TERMOGRAFIA
3. ISTITUTO TESSILE COTONIERO e ABBIGLIAMENTO di Busto Arsizio – VA
4. ARPA Torino.



## Somatometer – rhachis arrows measurer (only with v. PRO and FULL)

The somatometer is a device that shows the translation of the pelvis and measures the rhachis arrows. Its structure allows to have the same parameter also in the next controls. The thread of anthropometrical lead for its particular shape allows to arrive to the hindmost part of the sacral crest situated in the intergluteal fold. This characteristic allows a measurement with a millimetric precision of the arrows of the cervical lordosis curve, the lumbar and the sacral curve.

È una misurazione semplice da eseguire e ci permette in tempo reale di verificare se il nostro trattamento ha modificato la postura.

It is simple to measure and allows in real time to verify if our treatment has changed the posture.

The Somatometer is equipped, both with a transparent Plexiglas structure, with anthropometrical lead thread and arrows (divided into millimetres).